



*Giving in Gratitude  
Growing In Service*

**BUC Annual Pledge Process 2012**

Please complete and submit this pledge of 2012 financial support to the church office **by October 23, 2011**. THANK YOU.

Names: \_\_\_\_\_ Email: \_\_\_\_\_  
\_\_\_\_\_  
Address: \_\_\_\_\_ Phone: \_\_\_\_\_  
\_\_\_\_\_

I/We pledge \$ \_\_\_\_\_ per (check one box please)  Week  Month  Quarter  Single Payment  
for a total pledge for the 2012 calendar year of \$ \_\_\_\_\_

Payments will be made by:

- Check. *Make checks payable to Birmingham Unitarian Church.*
- Automated bank payment or bank withdrawal
  - Auto pay is already set up. I/We will update the amount, if needed, by January 2012.
  - I/We will initiate auto pay by January 2012
- Stock transfer
- Cash
- Other \_\_\_\_\_

Signature(s): \_\_\_\_\_  
\_\_\_\_\_

*If you need help with setup of an automated bank payment or stock transfer, contact Kim Ruiz,  
[kim.ruiz@bucmi.org](mailto:kim.ruiz@bucmi.org), 248-647-2380, Ext 12.*

To support a timely annual budget process, please return this form by **October 23, 2011**, to the church office.

*Why do we have a Stewardship Campaign?*

Stewardship Campaign pledge and non-pledge income funds three-quarters of BUC's operating budget.

*How Much Should I Pledge?*

*Worksheet - 3% Giving Level*

| ANNUAL PRE-TAX INCOME |        | RECOMMENDED ANNUAL PLEDGE |
|-----------------------|--------|---------------------------|
| (example)\$50,000     | x 0.03 | \$1500                    |

To meet our Pledge Income Goal, an average of \$1800 per pledge is needed. (BUC's 2011 per pledge average: \$1600)

If you want BUC to be more effective, more focused, fairer to its employees, and a brighter beacon for liberal religion in Southeastern Michigan, PLEASE GIVE GENEROUSLY.

Thank You!

BUC's Total Pledge Income Goal  
for 2012: \$500,000

*What could BUC do with more money?*

Expand Lifespan Education, extending quality educational and cultural offerings to BUC members of all ages.

Increase staff support for Rev. Dr. Hurt's executive functions and allow her to increase the time she dedicates to ministerial and pastoral work.

Increase the amount of plate collection dedicated to community needs and less to church operational expenses.

Address pressing interior and exterior needs of the facility to make our church a clean, safe and welcoming space to visitors, members and rental groups.

Improve the working environment for our dedicated staff and make equitable contributions to their retirement accounts.

Provide staff support for focused expansion of projects to exert moral force and promote social justice.

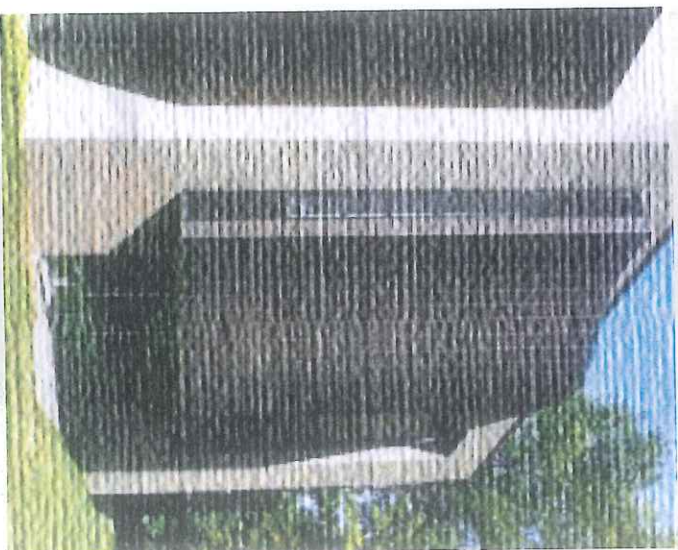
Extend the reach of BUC's message and attract new members through media.

**BIRMINGHAM UNITARIAN CHURCH**

38651 Woodward Avenue  
Bloomfield Hills, Michigan 48304  
T: (248) 647-2380 F: (248) 647 8007  
W: [www.BUCMI.org](http://www.BUCMI.org)

**BIRMINGHAM  
UNITARIAN  
CHURCH**

**STEWARDSHIP  
CAMPAIGN 2012**



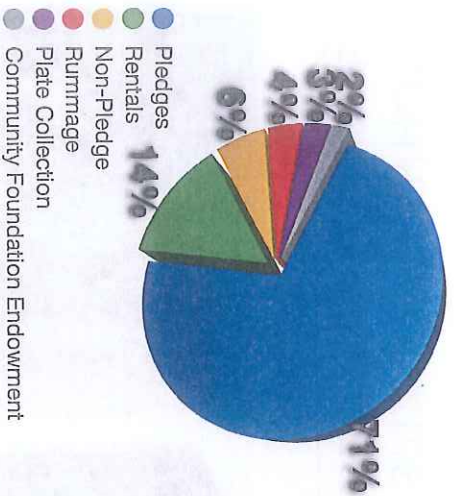
**Giving in Gratitude,  
Growing in Service**

Home is the place where, when you have to go there, they have to take you in.

-Robert Frost, 1915

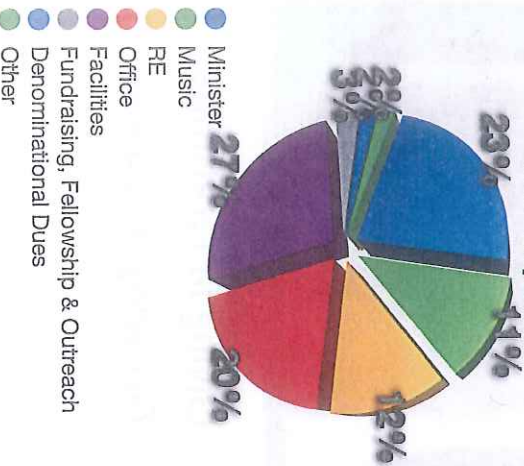
### Where Does Our Money Come From?

#### 2010 Income



### How Do We Spend Our Money?

#### 2010 Expense



## GIVING IN GRATITUDE...

In our pledge to BUC, we embody the value we assign to our participation in this faith community. We put a value on the role that *this* place and *these* people play in our lives

**This Place.** In addition to being a building that accommodates groups large and small, it has the needs of every structure: heating, cooling, plumbing, electrical as well as esthetics that foster learning and spiritual growth. BUC has every need that your home has, but on a larger scale. We all recognize that physical areas of the church need attention. The order that attention is given to these needs is determined solely by the money available to meet them. This is where *your* financial commitment is needed.

**These People.** Your church practices radical acceptance and in so doing improves the climate of a racially and economically divided region in a racially and economically divided country. We embrace, as our hymn says, 'gay and straight together.' We embrace differing spiritual agendas and strive to accept each other with all of our strengths and frailties. To offer a program that meets the need of our diverse congregation, *your* financial commitment is needed.

## GROWING IN SERVICE...

We all recognize areas of the BUC program that could be expanded to fill church and community needs.

As a church, we could exert *more* moral force to bring the change in our region and world that would improve the lives of all. *Your* financial commitment means the difference between staying where BUC has been or moving forward.

By strengthening our spiritual and educational offering, whether through children's and adult religious education - Lifespan Education - or expanding musical and other cultural offerings, we can attract more people to our community with the 'time, talent, and treasure' to help us exert the change we want to make.

While, in a sense, we are limited only by our imagination, BUC is also limited by the financial constraints put on it by relatively low historical pledging. *Your* financial commitment can make the difference. **We can do more...together. Thank You!**